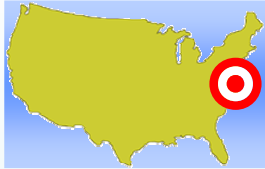
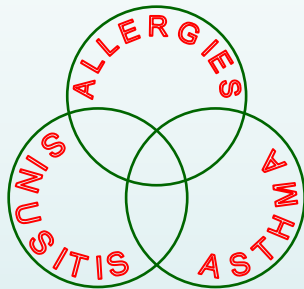


**Yes, it's here all right...**



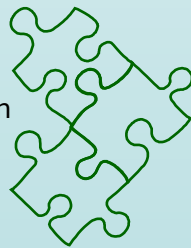
One of the worst areas for allergies according to the Asthma and Allergy Foundation of America is **right here in Baltimore.**

Allergies, sinusitis and asthma are commonly connected problems that are best solved **all at the same time.**



At our state-of-the-art center, these conditions are evaluated and treated by renowned experts **all in the same place.**

The patient is seen by an allergist and, if needed, also by an otolaryngologist and can even have a sinus CT scan done here **ASAP at GBMC.**



**Yes, it's all right here...**



Scan image on the right with a QR code reader app to connect to [asapGBMC.com](http://asapGBMC.com)



**Asthma Sinus Allergy Program at Greater Baltimore Medical Center**

*A State-of-the-Art Center for Efficient Testing and Effective Treatment of Asthma, Sinus and Allergy Problems in Children and Adults*

**[www.asapGBMC.com](http://www.asapGBMC.com)**

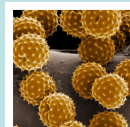
Physicians Pavilion North I  
6535 N. Charles Street, Suite 200  
Towson, Maryland 21204

Phone 410.583.8393  
Fax 410.583.8394  
Email [center@asapGBMC.com](mailto:center@asapGBMC.com)

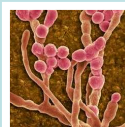
**QUICK QUIZ:**

Can you match these allergens with their photos? 1. Cladosporium molds 2. Dog dander 3. Dust mites 4. Ragweed pollen  
See reverse page for the answers.

A



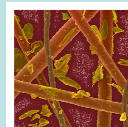
B



C



D



**Many Reasons Through Many Seasons  
Just One Call To Make -- ASAP@GBMC**



**Asthma Sinus Allergy Program at Greater Baltimore Medical Center**  
Tel 410.583.8393 [asapGBMC.com](http://asapGBMC.com)

